

(Available upon request from the Dean of Students and Chief of Police)

October 1, 2017

SOUTHERN UNION STATE COMMUNITY COLLEGE
2016 ANNUAL (Clery) SECURITY REPORT
AND CAMPUS CRIME STATISTICS
January 1, 2016 - December 31, 2016

Southern Union prepares this report to comply with the Jeanne Clery Disclosure of Campus Security Policy and Crime Statistics Act. The full text of this report can be located on our web site at www.suscc.edu, from the home page go to News/Events/ Current SUSCC Campus Crime Report.

Inquiries regarding the information contained herein should be directed to Tiffany Sanders, Dean of Students, Administration Building, Southern Union State Community College, P. O. Box 1000, Wadley, AL 36276 or by calling 256-395-2211. Annually, an email notification is made to all enrolled students that provide the web site to access this report. Staff and faculty receive similar notifications. Copies of the report may be obtained from the Dean of Students, Chief of Police, Dean of Student Development, Presidents, Financial Aid Office, Residential Life Office, Human Resources and Campus Police. Additional copies are posted in the staff and faculty lounges.

The Campus Sexual Violence Elimination (SaVE) Act

The Campus Sexual Violence Elimination (SaVE) Act represents a turning point in our nation's handling of sexual misconduct on college campuses and universities. Introduced by U.S. Senator Bob Casey and House Representative Caroline Maloney, SaVE will complement the Title IX Guidance by the U.S. Department of Education's Office for Civil Rights.

The Campus SaVE Act seeks to address the violence women face on campus: the highest rates of stalking, the highest risk of nonfatal intimate partner violence, and 20-25% of female students experiencing rape or attempted rape. This legislation will update the Jeanne Clery Act to create:

Transparency:

SaVE requires that incidents of domestic violence, dating violence, sexual assault, and stalking be disclosed in annual campus crime statistic reports. Additionally, students or employees reporting victimization will be provided with their written rights to:

- Be assisted by campus authorities if reporting a crime to law enforcement
- Change academic, living, transportation, or working situations to avoid a hostile environment
- Obtain or enforce a no contact directive or restraining order
- Have a clear description of their institution's disciplinary process and know the range of possible sanctions
- Receive contact information about existing counseling, health, mental health, victim advocacy, legal assistance, and other services available both on-campus and in the community

Accountability:

SaVE clarifies minimum standards for institutional disciplinary procedures covering domestic violence, dating violence, sexual assault, and stalking to ensure that:

- Proceedings shall provide a prompt, fair, and impartial investigation and resolution and are conducted by officials receiving annual training on domestic violence, sexual assault, and stalking
- Both parties may have others present during an institutional disciplinary proceeding and any related meeting, including an advisor of their choice
- Both parties will receive written outcomes of all disciplinary proceedings at the same time

Education:

SaVE instructs colleges and universities to provide programming for students and employees addressing the issues of domestic violence, dating violence, sexual assault and stalking. Education programs shall include:

- Primary prevention and awareness programs for all incoming students and new employees
- Safe and positive options for bystander intervention
- Information on risk reduction to recognize warning signs of abusive behavior
- Ongoing prevention and awareness programs for students and faculty

Collaboration:

SaVE establishes collaboration between the U.S. Departments of Justice, Education, and Health and Human Services to collect and disseminate best practices for preventing and responding to domestic violence, dating violence, sexual assault, and stalking.

VAWA Amendments to Clery

The Violence Against Women Act (VAWA) amendments to the Clery Act expand the rights afforded to campus survivors of sexual assault, domestic violence, dating violence, and stalking.

Law Enforcement | Institutions must have a policy statement that addresses the jurisdiction of security personnel and notes any agreements that are in place for the investigation of alleged criminal offenses (such as written memoranda of understanding).

Sexual Assault, Dating Violence, Domestic Violence, & Stalking | Colleges and universities must provide data regarding incidents of sexual assault, dating violence, domestic violence, and stalking. Institutions also must add policy statements specific to these crimes. These policy statements must outline the procedures an institution will follow after an incident of sexual assault, dating violence, domestic violence, or stalking, and identifies rights and options available to survivors.

Prevention Programming | The VAWA amendments require prevention programs that aim to stop these crimes before they occur. These programs promote positive and healthy behaviors that foster healthy, mutually-respectful relationships and sexuality, encourage safe bystander intervention tactics, and seek to change behavior and social norms in healthy and safe directions.

Confidentiality | The annual security report must address how the college or university completes Clery Act public recordkeeping and data-sharing without including identifying information about the survivor, and while keeping any accommodations or protective measures confidential.

Hate Crimes | Institutions must share data on incidents of hate crimes within their Clery-reportable geography. The VAWA amendments added gender identity and national origin to the categories of bias institutions must reflect within their statistics.

Read the full text of the VAWA amendments [here](#).

A. REPORTING CRIMINAL ACTIONS OR OTHER EMERGENCIES

1. It is the policy of Southern Union State Community College that any criminal act; act or threat of violence; injury; destruction of college or personal property; traffic accident; or other situation which occurs on any campus operated by Southern Union State Community College, and which may constitute an emergency, a danger to the health, safety, or property of any person, or a threat to the public order be reported immediately to one of the following:

Wadley Campus

James Holmes, Chief of Police	256-395-2211
Tiffany Sanders, Dean of Students	256-395-2211
Glenda Colagross, Interim President	256-395-2211
Steve Spratlin, Associate Dean of Instruction	256-395-2211
Anita Waldrep, Evening Coordinator	256-395-2211

Valley Campus

James Holmes, Chief of Police	256-395-2211
Tiffany Sanders, Dean of Students	256-395-2211
Glenda Colagross, Interim President	256-395-2211
Robin Brown, Director	334-756-4151

Opelika Campus

James Holmes, Chief of Police	256-395-2211
Randall Burroughs, Opelika Campus Police	334-745-6437
Linda North, Dean of Academics	334-745-6437
Darin Baldwin, Dean of Technology Ed & Workforce Dev.	334-745-6437
Tiffany Sanders, Dean of Students	256-395-2211
Rhonda Davis, Dean of Health Sciences	334-745-6437
Glenda Colagross, Interim President	334-745-6437
Tom Brawner, Evening Coordinator	334-745-6437

PLEASE CALL 911 FOR EMERGENCIES!!

2. Witnesses to any of the above-described situations will be asked to provide written statements and otherwise assist college officials and law enforcement officers in the investigation of the situation. Information provided by witnesses will be held in the strictest of confidence. It shall be an offense subject to appropriate disciplinary action for any Southern Union State Community College employee or student to file a false report of, knowingly make a false statement about, or interfere with the investigation of, any situation of the nature described in paragraph A.1. on page 1.

If you are a victim of a crime and do not want to pursue action within the College System or the criminal justice system, you may still want to consider making a confidential report. The purpose of a confidential report is to comply with your wish

to keep the matter confidential, while taking action to ensure the future safety of yourself and others. The College will use this information to maintain accurate records, determine patterns of crime (methods, location or assailant) and create a proactive approach to address the situation. The information filed in this manner will be counted and disclosed in the annual crimes statistics for the institution.

3. The College's designated official or officials will take all reasonable action to prevent or minimize any harm to the employees, students, and visitors of Southern Union State Community College. Furthermore, it shall be the duty of said official(s) to notify the appropriate law enforcement agency in the event of an act of a criminal nature, or of any other nature (for example, a traffic accident) which would ordinarily involve law enforcement officials. Additionally, it shall be the duty of said official(s) to contact the appropriate fire department, emergency medical agency, or other authority or agency which is due to be notified of the respective incident.

B. TIMELY WARNINGS

School Cast Emergency Alert Notification System

In the event that a situation arises, either on or off campus, that in the judgment of the President or his/her designee, constitutes an ongoing or continuing threat, a campus wide "timely warning" will be issued. The notifications are sent via School Cast to home telephones, cell phones, text messages and emails. Individuals are strongly encouraged to register more than one means of communication. Depending on the particular situation, especially a situation that could pose an immediate threat to the campus community and individuals, the President may also have a notification posted on the campus electronic bulletin boards and the college's home page. The Southern Union web site provides immediate access via computer to all faculty, staff and students. Additional information and registration is available on the Southern Union website at www.suscc.edu or by calling 256-395-2211.

Anyone with information warranting a timely warning should report the circumstances to the Chief of Police, President, Dean of Students, College officials or Campus Police.

C. SECURITY OF, AND ACCESS TO, CAMPUS FACILITIES

Southern Union has established procedures to ensure that students are secure while they are enrolled in the programs of the College. Southern Union offers day and evening classes on three campuses: Wadley Campus - Roberts Street, Wadley, AL 36276; Valley Campus -Fob James Drive, Valley, AL 36854; and Opelika Campus - 1701 Lafayette Parkway, Opelika, AL 36803. During business hours, the College is typically open to students, parents, employee, guest and invitees. During non business hours, accesses to College facilities require a key or admittance via campus police. In cases of extended closing, the College will only admit authorized persons to the facilities. Emergencies may necessitate changes or alterations to any posted schedules.

The Wadley Campus has the residence hall and athletic events. In addition to security guards and campus police officers, the College employs a Chief of Police, Residence Hall Coordinator, a part-time substitute Residential Coordinator and six Residence Hall Assistants (RA's). These personnel are scheduled as such to ensure a minimum of two staff members on campus twenty-four (24) hours a day, seven (7) days a week, while school is in session. Policy governing visitation in the residence halls has been developed and published in the *College Catalog/Student Handbook*. Information concerning this policy is also posted in the lobbies and SU web page (residential life).

Door propping is strictly prohibited. Violators of security policies are subject to disciplinary actions. Residents are encouraged to report any maintenance deficiency to the residential coordinator. Residents are encouraged to always lock their door when leaving, even if they are going down the hall. Additionally, residents are encouraged to carry some form of personal property insurance.

Residential Visitation Policy:

The residence lobby is for the use and convenience of students and their invited guests. This area is not designed for unscheduled group activities. Persons in the lobby creating unnecessary noise will be in violation of college regulations and will be required to leave. **All non-resident must sign-in and out at the desk in the lobby.**

Open Visitation Guidelines:

1. Open visitation hours are from 6:00 p.m. until 9:00 p.m. daily.
2. Visitors are required to sign-in to a specific room and to remain in that room only. They must also leave identification with residence assistant at the lobby desk.
3. Visitors must be at least 18 years of age or Southern Union students or members of the student's immediate family.
4. The student or roommate has the right to refuse visitation.
5. Visitors must be accompanied by their host, at all times, during the visit.
6. Failure to comply with the guidelines can result in the terminations of the visit and/or referral for student code of conduct violation.

OFF-LIMITS: Outside areas around the campus are off limits to all persons (except residents returning) after 11:00 p.m.

D. CAMPUS LAW ENFORCEMENT POLICIES AND PRACTICES

In August 2010, Southern Union hired a full time Chief of Police and created a campus police department. The Chief of Police and/or his officers have complete authority to apprehend and arrest anyone involved in illegal acts on-campus and areas immediately adjacent to the campus. If minor offenses, involving a SUSCC code of conduct violations are committed by a student, the Chief of Police may also refer the individual for disciplinary investigation. Major offenses such as rape, murder, aggravated assault, robbery and auto theft are jointly investigated with the assistance of the local authorities. Campus police and security personnel work closely with the local, state, and federal authorities.

In addition to certified police officers, Southern Union employees it's own security officers who have the authority to ask a person for identification and to determine whether individuals have lawful business at Southern Union. Security officers have the authority to issue parking tickets which are billed to the financial accounts of students, faculty and staff. The officers do not possess arrest power. They enforce the student code of conduct as published in the *College Catalog/Student Handbook* and are alert to violations of local, state, and federal laws which are reported to the local police department. College security personnel, campus police officers, and local law enforcement agencies share information on a regular basis. Campus security officers have the capability of radio communication with local police at all times. Security personnel are required to file a report within twenty-four (24) hours of the occurrence criminal or emergency incident. The Security officers are expected to maintain highly professional working relationships with the local police

departments both city and county. All crime victims and witnesses are strongly encouraged to immediately report the crime to campus security and the appropriate police agency. Prompt reporting will assure timely warning notices on-campus and timely disclosure of crime statistics. All incident reports are forwarded to the security supervisor and the Chief of Police office for review, follow up and potential action from the College.

E. CAMPUS PROGRAMS ON SECURITY AND SAFETY

All students, faculty, and staff are provided information concerning campus security procedures and practices through publications, forum, orientation, residence hall meetings, and special presentations. Annually during pre-college orientation, students and parents are provided information regarding personal safety. The common themes of the campus safety programs are to encourage students and employees to be more aware of their responsibility for their own security and the security of others.

When a time sensitive situation occurs, information is released via the campus emergency alert notification system (School Cast).

F. CRIME PREVENTION PROGRAMS FOR STUDENTS AND EMPLOYEES

Crime prevention demands constant interaction and outreaching to students, faculty and staff. Southern Union's crime prevention program emphasizes community awareness and interaction through the dissemination of materials and presentations focused on informing students, faculty and staff about their responsibilities in reducing criminal opportunity. Crime prevention, personal safety and theft prevention information was presented during the pre-college orientation sessions.

Campus safety tips are posted on the campus security web site at www.suscc.edu.

G. OFF CAMPUS ACTIVITY POLICY

A student is subject to disciplinary action by the College, up to and including dismissal, for misconduct occurring on any property owned or controlled by the College, or off campus at any function which is authorized, sponsored or conducted by the College, or in parking lots adjacent to areas or buildings where College functions are being conducted.

SOUTHERN UNION STATE COMMUNITY COLLEGE

Sexual Assault Prevention and Response

Southern Union educates the student community about sexual assaults and date rape through mandatory freshman orientations each fall. The Wadley, Opelika, and Valley Police Departments along with the campus police department offer sexual assault education and information programs to college students and employees upon request. Literature on date rape education, risk reduction, and college response is available through the Coordinator of Student Life.

H. SEXUAL OFFENDERS REGISTRATION

The Campus Sex Crimes Prevention Act (CSCPA) of 2000 is a federal law that provides for the tracking of convicted sex offenders enrolled at, or employed by, institutions of higher education. The CSCPA is an amendment to the Jacob Wetterling Crimes Against Children and Sexually Violent Offenders Act. In May 1996, the Alabama State Legislature passed a law establishing the Community Notification Act. This law requires convicted adult sex offenders to notify local law enforcement of their residence within the community where they are living. Law enforcement authorities must then notify community residents living near the sex offender. Along with this law are provisions that prohibit a convicted sex offender from living near a school and living in a residence with children.

The College is required to inform the campus community that the Alabama Bureau of Investigation (ABI) registration list of sex offenders is available through the Dean of Students. Additionally, a list of Alabama registered sex offenders is available from the Alabama Department of Public Safety's web site at www.dps.state.al.us or 334-242-4371.

J. DRUG-FREE WORKPLACE POLICY

In compliance with the drug-free workplace requirements of Public Law 100-690 for the recipients of Federal contracts and grants, the following policy is in effect for Southern Union State Community College.

The unlawful manufacture, distribution, dispensation, possession, or use of a controlled substance is prohibited by Southern Union State Community College on any property owned, leased, or controlled by Southern Union State Community College or during any

activity conducted, sponsored, or authorized by or on behalf of Southern Union State Community College. A “controlled substance” shall include any substance defined as a controlled substance in Section 102 of the Federal Controlled Substance Act (Code of Alabama, Section 20-2-1, et seq.)

Southern Union State Community College has and shall maintain a drug-free awareness program to inform employees about the dangers of drug abuse in the workplace; the college’s policy of maintaining a drug-free workplace; any available drug counseling, rehabilitation, and employee assistance program; and the penalties that may be imposed upon employees for drug abuse violations.

Any employee who is convicted by any Federal or State Court of an offense which constitutes a violation of paragraph 2 above shall notify the College President in writing of said conviction within five (5) days after the conviction occurs. Conviction, as defined in Public Law 100-690, shall mean “a finding of guilt (including a plea of nolo contendere) or imposition of sentence, or both.

In the event of a report of a conviction, where the employee is working in a project or program funded through a Federal contract or grant, Southern Union State Community College shall notify in writing within ten (10) days any Federal agency to which such notification by Southern Union State Community College is required under Public Law 100-690.

In the event an employee violates paragraph 2 above or receives conviction as explained in paragraph 5 above, the respective employee shall be subject to appropriate disciplinary action which may include, but is not limited to, termination of employment. Southern Union State Community College shall also reserve the right to require said employee, as a condition of continued employment, to satisfactorily complete a drug treatment or rehabilitation program of a reasonable duration and nature.

Southern Union State Community College shall make a good faith effort to ensure that paragraphs 1-6 above are followed. Each employee of Southern Union State Community College shall receive a copy of this policy.

Drug and Alcohol Programs

Southern Union offers services to prevent the illicit use of drugs and the abuse of alcohol by the students and employees. The College provides services related to drug use and abuse including dissemination of informational materials, educational programs, college disciplinary action and referrals to local agencies for counseling.

Referral sources:

1. Abuse Addiction Agency (Counselors available 24 hours a day)
1-800-430-5317 www.thewatershed.com
2. Bradford Health Services – 334-749-3445, www.bradfordhealth.com.
3. Cheaha Mental Health Center – 256-245-2201
4. East Alabama Mental Health – Mental Retardation and Substance Abuse
334-742-2700
5. Hazelden Foundation – 800-257-7800
6. Hill Crest Behavioral Health Services – 1-800-292-8553
7. Opelika Addictions Center – 334-742-2130
8. LaGrange Treatment Center – 706-882-5610
9. Lanier Health Services & Rehab – 334-756-1126
10. Alsobrook Counseling Center – 334-756-4117

K. SUBSTANCE ABUSE DISCIPLINARY ACTIONS

Southern Union State Community College has the responsibility to protect its integrity and to insure that the rights and privileges of the College Family, as well as the community-at-large are not violated by the actions of an individual or groups of individuals. In the event an employee violates the drug and alcohol policy or receives a conviction as describe earlier, the respective employee shall be subject to appropriate disciplinary action which may include, but not termination of employment. Southern Union State Community College shall also reserve the right to require said employee, as a condition of continued employment, to satisfactorily complete a drug treatment or rehabilitation program of a reasonable duration and nature.

DRUG PREVENTION PROGRAM

Purpose – SUSCC’s Drug Free Campus Policy is based on the following:

Objectives:

1. To maintain a safe and healthy environment for all students and employees.
2. To minimize accidental injuries to persons or property.
3. To minimize the absenteeism and tardiness of employees
4. To improve the educational performance of all students.
5. To identify resources for alcohol or substance abuse rehabilitation for students and employees, when appropriate.
6. To comply with the Federal Drug-Free Workplace Act of 1988, the Drug-Free Schools and Communities Act Amendments of 1989 and other applicable legislation.
7. To adopt and implement a program to prevent use of illicit drugs and abuse of alcohol by students and employees, and
8. To promote an educational environment free from the abuse of alcohol and use of illegal drugs.

L. STUDENT CODE OF CONDUCT

STUDENT CODE OF CONDUCT RULES AND REGULATIONS

Southern Union State Community College appreciates that students are citizens and members of the academic community. Upon enrolling in the college, each student assumes the responsibility to conduct himself in a manner attuned with the College's mission and function as an educational institution. Students are expected to abide by both the statutes of local, state, and federal government and the College's policies. The College may discipline a student for violating its standards of student conduct even though the student is also penalized by the local, state, and federal authorities for the same action.

The Code of Student Conduct identifies the disciplinary procedures that apply to individual students and groups. Southern Union has jurisdiction for disciplinary purposes over a person who was a student at the time he allegedly violated the College's policies. A student is subject to disciplinary action by the College, up to and including dismissal, for misconduct occurring on any property owned or controlled by the College, or off campus at any function which is authorized, sponsored or conducted by the College. This includes parking lots adjacent to areas or buildings where College functions are being conducted. Such misconduct shall include but is not limited to the commission of or the attempt to commit any of the following offenses.

The following (1-16) are prohibited and apply to all College property including residence halls and off-campus activities. Discovery of an offense will result in disciplinary action, which will typically be probation for one calendar year. The second violation of any rule (1-16) will result in suspension and/or expulsion from the College and/or the residence hall. If, in the opinion of the Dean of Students, the violation of rules 1-16 is sufficiently serious, suspension/expulsion from the College/residence hall is possible on the first offense.

1. Gambling in any form.
2. Pets.
3. Open element electrical appliances and microwave ovens.
4. Solicitation and sales without permission from Coordinator.
5. Weight-lifting apparatus.
6. Excessive noise determined to be disturbing to other residents.
7. Dartboards, darts, paint ball guns or any type of throwing knives.
8. Smoking inside campus buildings.
9. Use of profane language or verbal abuse toward any College employee.
10. Violation of residence hall visitation rules as published in College Catalog.
11. Candles, incense, or other flame-emitting articles in the residence hall.

12. Splicing into or otherwise “tampering” with existing electrical wiring in the residence hall.
13. Misuse of residence hall keys or outside entrance keys by loaning personal keys to another person or by duplicating keys.
14. The display of alcohol or drug-related materials including pictures, posters, or empty containers.
15. Lewd, indecent, pornographic, obscene behavior or expression. (This offense includes the use of verbal or symbolic expressions, which could be interpreted as insulting tone, race, gender, religion, national origin or disability. Also, this offense includes the display of pornography including pictures, posters, or videos.)
16. Unauthorized possession of College, state or federal property or supplies.
17. Disruptive or disorderly conduct which interferes with the rights and opportunities of those who attend the college to utilize and enjoy educational facilities or activities

The following rules (17-28) will merit automatic disciplinary suspension or expulsion from the College and the residence hall.

18. Intentional misuse of any College fire alarm or fire-fighting equipment/ or failure to comply with safety drills to include fire, tornado, and/or lock downs.
19. Possession or use of alcoholic beverages in the residence hall, all other areas of the campus, or at any off-campus function sponsored by the College.
20. Failure to promptly comply with directions of College officials or law enforcement officers acting in the performance of their duties as such officials and officers.
21. Theft or intentional damage to property of the College or to the property of any members or visitors of the College community. Theft includes unauthorized use of cable service.
22. Actual, or threatened physical abuse of any person, including hazing, harassment, or any other act, which endangers the health or safety of any such person.
23. Use, possession, sale or distribution of drugs, as outlined by the statutes of the State of Alabama, except as expressly prescribed by a physician. **In an effort to ensure a drug-free campus, the College reserves the right to use trained dogs to search for contraband substances.**
24. Use, possession, sale or distribution of weapons or firearms (including pellet guns and air rifles), ammunition, fireworks, and incendiary or any type of explosive device or material.
25. Disorderly or disruptive conduct, including rioting, inciting to riot, assembling to riot, raiding, inciting to raid and assembling to raid College properties. This includes unauthorized interference with the use of or access to College facilities. This offense also includes in-class behavior which unduly disrupts the order of the respective class or any behavior determined to be disruptive to the educational process. Participants are defined as those persons actively engaged in the action.
26. Violation on campus of any federal, state, or local laws.
27. All forms of dishonest including cheating and plagiarism and furnishing false information to the college.




- 28. Forgery, alteration or misuse of College documents, records or identification.
- 29. Unauthorized entry to or use of any College facility including Residence Hall.

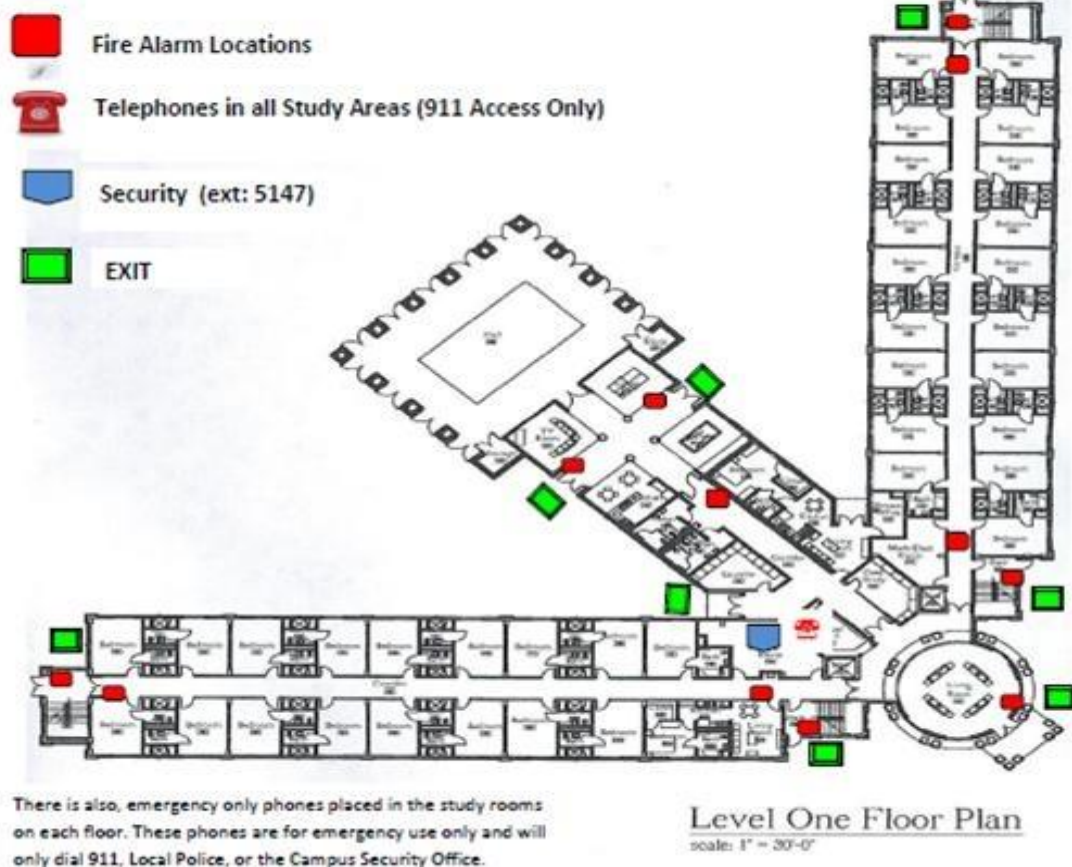
P. DISCLOSURE OF FIRE SAFETY STANDARDS AND

The number of fires and the cause of each fire	2016	0
Number of injuries related to the fire	2016	0
Number of deaths	2016	0
Value of property damage	2016	0

RESIDENTIAL SAFETY SUMMARY

Emergency procedures, including fire drill regulations, are posted on the back of each residence hall room door.

Southern Union State Community College Emergency Evacuation Plan		
 FIRE	 Severe Weather	 Power Outage
<ul style="list-style-type: none"> Evacuate the building using the nearest exit or alternative exit if nearest exit is blocked. DO NOT use elevators. Exit the building to designated area. <p>*Designated area is in the parking lot in front of the Student Center</p>	<ul style="list-style-type: none"> Proceed to lowest level and avoid all doors and windows. Line-up in hallway or interior room. DO NOT leave the building unless otherwise instructed to do so. 	<ul style="list-style-type: none"> Remain calm – provide assistance to others if necessary. If evacuation is necessary, move carefully to a lighted area. Lighted signs will indicate exits. If time permits, unplug computers and other personal appliances.
<p><i>For complete details on Policies and Procedures for Emergency Evacuation please refer to the Student Handbook.</i></p>		



Each student is responsible for compliance to the emergency procedures and keeping them posted. Fire drills are conducted each semester with a report and an evaluation given to the Chief of Police. Copies of the reports are maintained in the residential hall, Chief of Police office and the Dean of Student's office. The information is available to the State and City Fire Marshals. The College also conducts a minimum of, monthly healthy and safety inspections and semester fire safety inspections. Additional inspections are conducted to ensure that extinguishers, emergency lighting, exit signs, and other fire system equipment are in compliance with the NFPA codes.

Statistics for Calendar Year 2016
(January 1, 2016 through December 31, 2016)
with statistics for calendar years 2015 and 2014

Southern Union State Community College

OPE ID: 00104000

General Information

750 Roberts Street
Wadley, Al 36276
Randolph County Alabama
For more information about this institution, visit www.suscc.edu

Campus Police Department Information:

Chief of Police- Mr. Jimmy Holmes
256-395-2211

Residence Hall:

This institution provides On-Campus housing.
Residence hall statistics are a subset of On-Campus statistics.

Local Crime Statistics:

Local statistics are included in the report.

SOUTHERN UNION STATE COMMUNITY COLLEGE

WADLEY CAMPUS (MAIN CAMPUS)

The crime data reported by the institutions have not been subjected to independent verification by the U.S. Department of Education. Therefore, the Department cannot vouch for the accuracy of the data reported here.

Criminal Offenses

Criminal Offenses- On Campus	2014	2015	2016
a. Murder/Non-negligent manslaughter	0	0	0
b. Negligent manslaughter	0	0	0
c. Sex offenses - Forcible	0	0	0
d. Sex offenses - Non-forcible	0	0	0
Incest	0	0	0
Statutory Rape	0	0	0
e. Robbery	0	0	0
f. Aggravated assault	0	0	0
g. Burglary	3	0	1
h. Motor vehicle theft	0	0	0
i. Arson	0	0	0

Criminal Offenses - On-Campus Residence Halls(Residence Halls are a subset of On Campus)	2014	2015	2016
a. Murder/Non-negligent manslaughter	0	0	0
b. Negligent manslaughter	0	0	0
c. Sex offenses - Forcible	0	0	0
d. Sex offenses - Non-forcible (incest and statutory rape only)	0	0	0
e. Robbery	0	0	0
f. Aggravated assault	0	0	0
g. Burglary	3	0	1
h. Motor vehicle theft	0	0	0
i. Arson	0	0	0

Public Property	2014	2015	2016
a. Murder/Non-negligent manslaughter	0	0	0

b. Negligent manslaughter	0	0	0
c. Sex offenses - Forcible	0	0	0
d. Sex offenses - Non-forcible (incest and statutory rape only)	0	0	0
e. Robbery	0	0	0
f. Aggravated assault	0	0	0
g. Burglary	0	0	0
h. Motor vehicle theft	0	0	0
i. Arson	0	0	0

VAWA Offenses-On Campus	2014	2015	2016
a. Domestic Violence	0	0	0
b. Dating Violence	0	0	0
c. Stalking	0	0	0

SOUTHERN UNION STATE COMMUNITY COLLEGE

OPE ID: 00010400

WADLEY CAMPUS (MAIN CAMPUS)

The crime data reported by the institutions have not been subjected to independent verification by the U.S. Department of Education. Therefore, the Department cannot vouch for the accuracy of the data reported here.

Hate Offenses

The following hate offenses manifest evidence of prejudice based on race, religion, sexual orientation, gender, disability or ethnicity/national origin.

Hate Offenses- On Campus	2014	2015	2016
a. Murder/Non-negligent manslaughter	0	0	0
b. Negligent manslaughter	0	0	0
c. Sex offenses - Forcible	0	0	0
d. Sex offenses - Non-forcible (incest and statutory rape only)	0	0	0
e. Robbery	0	0	0
f. Aggravated assault	0	0	0
g. Burglary	0	0	0
h. Motor vehicle theft	0	0	0
i. Arson	0	0	0
j. Simple-Assault	0	0	0
k. Laceny-theft	0	0	0
l. Intimidation	0	0	0
m. Destruction/damage/vandalism of property	0	0	0

Hate Offenses- On Campus Residence Halls (Re	2014	2015	2016
a. Murder/Non-negligent manslaughter	0	0	0
b. Negligent manslaughter	0	0	0
c. Sex offenses - Forcible	0	0	0
d. Sex offenses - Non-forcible (incest and statutory rape only)	0	0	0
e. Robbery	0	0	0
f. Aggravated assault	0	0	0
g. Burglary	0	0	0
h. Motor vehicle theft	0	0	0
i. Arson	0	0	0
j. Simple-Assault	0	0	0
k. Laceny-theft	0	0	0
l. Intimidation	0	0	0
m. Destruction/damage/vandalism of property	0	0	0

Hate Offenses- On Campus	2014	2015	2016
a. Murder/Non-negligent manslaughter	0	0	0
b. Negligent manslaughter	0	0	0
c. Sex offenses - Forcible	0	0	0
d. Sex offenses - Non-forcible (incest and statutory rape only)	0	0	0
e. Robbery	0	0	0
f. Aggravated assault	0	0	0
g. Burglary	0	0	0
h. Motor vehicle theft	0	0	0
i. Arson	0	0	0
j. Simple-Assault	0	0	0
k. Laceny-theft	0	0	0
l. Intimidation	0	0	0
m. Destruction/damage/vandalism of property	0	0	0

SOUTHERN UNION STATE COMMUNITY COLLEGE

OPE ID: 00010400

WADLEY CAMPUS (MAIN CAMPUS)

The crime data reported by the institutions have not been subjected to independent verification by the U.S. Department of Education. Therefore, the Department cannot vouch for the accuracy of the data reported here.

Arrests

Arrests - On-Campus	2014	2015	2016
a. Illegal weapons possession	0	0	0
b. Drug law violations	0	0	1
c. Liquor law violations	0	0	5

Arrests - On-Campus Residence Halls (Residence Halls are a subset of on Campus)	2014	2015	2016
a. Illegal weapons possession	0	0	0
b. Drug law violations	0	0	1
c. Liquor law violations	0	0	0

Arrests – Public Property	2014	2015	2016
a. Illegal weapons possession	0	0	0
b. Drug law violations	0	0	0
c. Liquor law violations	0	0	0

Disciplinary Actions-On Campus	2014	2015	2016
a. Illegal weapons possession	0	0	0
b. Drug law violations	0	1	9
c. Liquor law violations	3	1	7

Disciplinary Actions- On Campus Student Housing Facilities	2014	2015	2016
a. Illegal weapons possession	0	0	0
b. Drug law violations	0	1	1
c. Liquor law violations	3	1	0

Disciplinary Actions-Public Property	2014	2015	2016
a. Weapons, carrying, possession, etc	0	0	0
b. Drug abuse violations	0	0	0
c. Liquor law violations	0	0	0

Fires

On Campus Student Housing Facilities		2014	2015	2016
Name of Facility	Street Address	0	0	0
1. Residence Hall	852 College Dr Wadley, AL 36276			

Fires- Summary
Residence Hall

Fires-0 2010
Injuries-0 Deaths-0

General Information

1701 Lafayette Parkway

Opelika, Alabama 36801

Lee County Alabama

For more information about this institution, visit www.suscc.edu

Campus Police Department Information:

Chief of Police- Mr. Jimmy Holmes

256-395-2211

Residence Hall:

This institution does not provide On-Campus housing.

Local Crime Statistics:

Local statistics are included in the report.

SOUTHERN UNION STATE COMMUNITY COLLEGE

OPE ID: 00010400

OPELIKA CAMPUS

The crime data reported by the institutions have not been subjected to independent verification by the U.S. Department of Education. Therefore, the Department cannot vouch for the accuracy of the data reported here.

Criminal Offenses

Criminal Offenses- On Campus	2014	2015	2016
a. Murder/Non-negligent manslaughter	0	0	0
b. Negligent manslaughter	0	0	0
c. Sex offenses - Forcible	0	0	0
d. Sex offenses - Non-forcible (incest and statutory rape only)	0	0	0
e. Robbery	0	0	0
f. Aggravated assault	0	0	0
g. Burglary	0	0	0
h. Motor vehicle theft	0	1	0
i. Arson	0	0	0

Criminal Offenses – Non campus	2014	2015	2016
a. Murder/Non-negligent manslaughter	0	0	0
b. Negligent manslaughter	0	0	0
c. Sex offenses - Forcible	0	0	0
d. Sex offenses - Non-forcible (incest and statutory rape only)	0	0	0
e. Robbery	0	0	0
f. Aggravated assault	0	0	0
g. Burglary	0	0	0
h. Motor vehicle theft	0	0	0
i. Arson	0	0	0

Public Property	2014	2015	2016
a. Murder/Non-negligent manslaughter	0	0	0
b. Negligent manslaughter	0	0	0
c. Sex offenses - Forcible	0	0	0
d. Sex offenses - Non-forcible (incest and statutory rape only)	0	0	0

e. Robbery	0	0	0
f. Aggravated assault	0	0	0
g. Burglary	0	0	0
h. Motor vehicle theft	0	0	0
i. Arson	0	0	0

VAWA Offenses-On Campus	2014	2015	2016
a. Domestic Violence	0	0	0
b. Dating Violence	0	0	0
c. Stalking	0	0	0

SOUTHERN UNION STATE COMMUNITY COLLEGE

OPE ID: 00010400

OPELIKA CAMPUS

The crime data reported by the institutions have not been subjected to independent verification by the U.S. Department of Education. Therefore, the Department cannot vouch for the accuracy of the data reported here.

Hate Offenses

The following hate offenses manifest evidence of prejudice based on race, religion, sexual orientation, gender, disability or ethnicity/national origin.

Hate Offenses- On Campus	2014	2015	2016
a. Murder/Non-negligent manslaughter	0	0	0
b. Negligent manslaughter	0	0	0
c. Sex offenses - Forcible	0	0	0
d. Sex offenses - Non-forcible (incest and statutory rape only)	0	0	0
e. Robbery	0	0	0
f. Aggravated assault	0	0	0
g. Burglary	0	0	0
h. Motor vehicle theft	0	0	0
i. Arson	0	0	0
j. Simple-Assault	0	0	0
k. Laceny-theft	0	0	0
l. Intimidation	0	0	0
m. Destruction/damage/vandalism of property	0	0	0

Hate Offenses- Non Campus	2014	2015	2016
a. Murder/Non-negligent manslaughter	0	0	0
b. Negligent manslaughter	0	0	0
c. Sex offenses - Forcible	0	0	0
d. Sex offenses - Non-forcible (incest and statutory rape only)	0	0	0
e. Robbery	0	0	0
f. Aggravated assault	0	0	0
g. Burglary	0	0	0
h. Motor vehicle theft	0	0	0
i. Arson	0	0	0
j. Simple-Assault	0	0	0
k. Laceny-theft	0	0	0
l. Intimidation	0	0	0
m. Destruction/damage/vandalism of property	0	0	0

Hate Offenses- Public Property	2014	2015	2016
a. Murder/Non-negligent manslaughter	0	0	0
b. Negligent manslaughter	0	0	0
c. Sex offenses - Forcible	0	0	0
d. Sex offenses - Non-forcible (incest and statutory rape only)	0	0	0
e. Robbery	0	0	0
f. Aggravated assault	0	0	0
g. Burglary	0	0	0
h. Motor vehicle theft	0	0	0
i. Arson	0	0	0
j. Simple-Assault	0	0	0
k. Laceny-theft	0	0	0
l. Intimidation	0	0	0
m. Destruction/damage/vandalism of property	0	0	0

OPELIKA CAMPUS

The crime data reported by the institutions have not been subjected to independent verification by the U.S. Department of Education. Therefore, the Department cannot vouch for the accuracy of the data reported here.

Arrests

Arrests - On-Campus	2014	2015	2016
a. Illegal weapons possession	0	0	0
b. Drug law violations	1	3	0
c. Liquor law violations	3	0	0

Arrests – Non- Campus	2014	2015	2016
a. Illegal weapons possession	0	0	0
b. Drug law violations	0	0	0
c. Liquor law violations	0	0	0

Arrests – Public Property	2014	2015	2016
a. Illegal weapons possession	0	0	0
b. Drug law violations	0	0	0
c. Liquor law violations	0	0	0

Disciplinary Actions-On Campus	2014	2015	2016
a. Illegal weapons possession	0	0	0
b. Drug law violations	1	0	0
c. Liquor law violations	3	0	0

Disciplinary Actions- Non Campus	2014	2015	2016
a. Illegal weapons possession	0	0	0
b. Drug law violations	0	0	0
c. Liquor law violations	0	0	0

General Information

FOB James Drive
Valley, Alabama 36854
Chambers County Alabama
For more information about this institution, visit www.suscc.edu

Campus Police Department Information:

Chief of Police- Mr. Jimmy Holmes
256-395-2211

Residence Hall:

This institution does not provide On-Campus housing.

Local Crime Statistics:

Local statistics are not in the report.

SOUTHERN UNION STATE COMMUNITY COLLEGE

OPE ID: 00010400

VALLEY CAMPUS

The crime data reported by the institutions have not been subjected to independent verification by the U.S. Department of Education. Therefore, the Department cannot vouch for the accuracy of the data reported here.

Criminal Offenses

Criminal Offenses- On Campus	2014	2015	2016
a. Murder/Non-negligent manslaughter	0	0	0
b. Negligent manslaughter	0	0	0
c. Sex offenses - Forcible	0	0	0
d. Sex offenses - Non-forcible (incest and statutory rape only)	0	0	0
e. Robbery	0	0	0
f. Aggravated assault	0	0	0
g. Burglary	0	0	2
h. Motor vehicle theft	0	0	0
i. Arson	0	0	0

Criminal Offenses – Non campus	2014	2015	2016
a. Murder/Non-negligent manslaughter	0	0	0
b. Negligent manslaughter	0	0	0
c. Sex offenses - Forcible	0	0	0
d. Sex offenses - Non-forcible (incest and statutory rape only)	0	0	0
e. Robbery	0	0	0
f. Aggravated assault	0	0	0
g. Burglary	0	0	0
h. Motor vehicle theft	0	0	0
i. Arson	0	0	0

VAWA Offenses-On Campus	2014	2015	2016
a. Domestic Violence	0	0	0
b. Dating Violence	0	0	0
c. Stalking	0	0	0

Public Property	2014	2015	2016
a. Murder/Non-negligent manslaughter	0	0	0
b. Negligent manslaughter	0	0	0
c. Sex offenses - Forcible	0	0	0
d. Sex offenses - Non-forcible (incest and statutory rape only)	0	0	0
e. Robbery	0	0	0
f. Aggravated assault	0	0	0
g. Burglary	0	0	0
h. Motor vehicle theft	0	0	0
i. Arson	0	0	0

SOUTHERN UNION STATE COMMUNITY COLLEGE

OPE ID: 00010400

VALLEY CAMPUS

The crime data reported by the institutions have not been subjected to independent verification by the U.S. Department of Education. Therefore, the Department cannot vouch for the accuracy of the data reported here.

Hate Offenses

The following hate offenses manifest evidence of prejudice based on race, religion, sexual orientation, gender, disability or ethnicity/national origin.

Hate Offenses- On Campus	2014	2015	2016
a. Murder/Non-negligent manslaughter	0	0	0
b. Negligent manslaughter	0	0	0
c. Sex offenses - Forcible	0	0	0
d. Sex offenses - Non-forcible (incest and statutory rape only)	0	0	0
e. Robbery	0	0	0
f. Aggravated assault	0	0	0
g. Burglary	0	0	0
h. Motor vehicle theft	0	0	0
i. Arson	0	0	0
j. Simple-Assault	0	0	0
k. Laceny-theft	0	0	0
l. Intimidation	0	0	0
m. Destruction/damage/vandalism of property	0	0	0

Hate Offenses- Non Campus	2014	2015	2016
a. Murder/Non-negligent manslaughter	0	0	0
b. Negligent manslaughter	0	0	0
c. Sex offenses - Forcible	0	0	0
d. Sex offenses - Non-forcible (incest and statutory rape only)	0	0	0
e. Robbery	0	0	0
f. Aggravated assault	0	0	0
g. Burglary	0	0	0
h. Motor vehicle theft	0	0	0
i. Arson	0	0	0
j. Simple-Assault	0	0	0
k. Laceny-theft	0	0	0
l. Intimidation	0	0	0
m. Destruction/damage/vandalism of property	0	0	0

Hate Offenses- Public Property	2014	2015	2016
a. Murder/Non-negligent manslaughter	0	0	0
b. Negligent manslaughter	0	0	0
c. Sex offenses - Forcible	0	0	0
d. Sex offenses - Non-forcible (incest and statutory rape only)	0	0	0
e. Robbery	0	0	0
f. Aggravated assault	0	0	0
g. Burglary	0	0	0
h. Motor vehicle theft	0	0	0
i. Arson	0	0	0
j. Simple-Assault	0	0	0
k. Laceny-theft	0	0	0
l. Intimidation	0	0	0
m. Destruction/damage/vandalism of property	0	0	0

SOUTHERN UNION STATE COMMUNITY COLLEGE

OPE ID: 00010400

VALLEY CAMPUS

The crime data reported by the institutions have not been subjected to independent verification by the U.S. Department of Education. Therefore, the Department cannot vouch for the accuracy of the data reported here.

Arrests

Arrests - On-Campus	2014	2015	2016
a. Illegal weapons possession	0	0	0
b. Drug law violations	0	0	0
c. Liquor law violations	0	0	0

Arrests – Non- Campus	2014	2015	2016
a. Illegal weapons possession	0	0	0
b. Drug law violations	0	0	0
c. Liquor law violations	0	0	0

Arrests – Public Property	2014	2015	2016
a. Illegal weapons possession	0	0	0
b. Drug law violations	0	0	0
c. Liquor law violations	0	0	0

Disciplinary Actions-On Campus	2014	2015	2016
a. Illegal weapons possession	0	0	0
b. Drug law violations	0	0	0
c. Liquor law violations	0	0	0

Disciplinary Actions- Non Campus	2014	2015	2016
a. Illegal weapons possession	0	0	0
b. Drug law violations	0	0	0
c. Liquor law violations	0	0	0